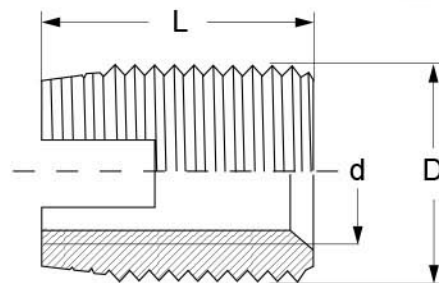




BaerFix® Thread Inserts with cutting slots

Material
Case-hardened steel, zinc-plated, yellow chromated
conform to RoHS

d	D	L	No.	packing unit
M				
M 2 x 0,4*	M 4,5 x 0,5	6 mm	FE02 1-FE02	10 100
M 2,5 x 0,45*	M 4,5 x 0,5	6 mm	FE025 1-FE025	10 100
M 3 x 0,5	M 5 x 0,5	6 mm	FE03 1-FE03	10 100
M 4 x 0,7	M 6,5 x 0,75	8 mm	FE04 1-FE04	10 100
M 5 x 0,8	M 8 x 1,0	10 mm	FE05 1-FE05	10 100
M 6 x 1,0	M 10 x 1,5	14 mm	FE06 1-FE06	10 100
M 8 x 1,25	M 12 x 1,5	15 mm	FE08 1-FE08	10 100
M 10 x 1,5*	M 14 x 1,5	18 mm	FE10 1-FE10	5 100
M 12 x 1,5*	M 16 x 1,5	22 mm	FE125	5
M 12 x 1,75*	M 16 x 1,5	22 mm	FE12 1-FE12	5 100
M 14 x 1,5*	M 18 x 1,5	24 mm	FE145	5
M 14 x 2,0*	M 18 x 1,5	24 mm	FE14 1-FE14	5 50
M 16 x 2,0*	M 20 x 1,5	22 mm	FE16 1-FE16	5 50
M 18 x 2,5*	M 22 x 1,5	24 mm	FE18	50
M 20 x 2,5*	M 26 x 1,5	27 mm	FE20	50
M 22 x 2,5*	M 26 x 1,5	30 mm	FE22	50
M 24 x 3,0*	M 30 x 1,5	30 mm	FE24	50
UNC				
UNC 4 x 40*	M 5 x 0,5	6 mm	FE70	
UNC 6 x 32*	M 6 x 0,75	8 mm	FE71	
UNC 8 x 32*	M 6,5 x 0,75	8 mm	FE72	
UNC 10 x 24*	M 8 x 1,0	10 mm	FE73	
UNC 1/4 x 20*	M 10 x 1,5	14 mm	FE74 1-FE74	10 100
UNC 5/16 x 18*	M 12 x 1,5	15 mm	FE75 1-FE75	10 100
UNC 3/8 x 16*	M 14 x 1,5	18 mm	FE76 1-FE76	5 100
UNC 7/16 x 14*	M 16 x 1,5	22 mm	FE77 1-FE77	5 100
UNC 1/2 x 13*	M 18 x 1,5	22 mm	FE78 1-FE78	5 100
UNC 5/8 x 11*	M 20 x 1,5	22 mm	FE79	
UNF				
UNF 4 x 40*	M 5 x 0,5	6 mm	FE80	
UNF 6 x 40*	M 6 x 0,75	8 mm	FE81	
UNF 8 x 36*	M 6,5 x 0,75	8 mm	FE82	
UNF 10 x 32*	M 8 x 1,0	10 mm	FE83	
UNF 1/4 x 28*	M 10 x 1,5	14 mm	FE84 1-FE84	10 100
UNF 5/16 x 24*	M 12 x 1,5	15 mm	FE85 1-FE85	10 100
UNF 3/8 x 24*	M 14 x 1,5	18 mm	FE86 1-FE86	5 100
UNF 7/16 x 20*	M 16 x 1,5	22 mm	FE87 1-FE87	5 100
UNF 1/2 x 20*	M 18 x 1,5	22 mm	FE88 1-FE88	5 100
UNF 5/8 x 18*	M 20 x 1,5	22 mm	FE89	



i Stainless steel 1.4105, Brass, and other materials on request

Please see borehole- and further technical information on page 22 - 23.

* stock goods are not conform to RoHS in this dimensions. Please inquire if you wish conform inserts.

BaerFix® Thread Inserts with cutting slots

Material

Stainless steel 1.4305 (AISI 303)

d	D	L	No.	packing unit
M 3 x 0,5	M 5 x 0,5	6 mm	FA43	10
			1-FA43	100
M 4 x 0,7	M 6,5 x 0,75	8 mm	FA44	10
			1-FA44	100
M 5 x 0,8	M 8 x 1,0	10 mm	FA45	10
			1-FA45	100
M 6 x 1,0	M 10 x 1,5	14 mm	FA46	10
			1-FA46	100
M 8 x 1,25	M 12 x 1,5	15 mm	FA48	10
			1-FA48	100
M 10 x 1,5	M 14 x 1,5	18 mm	FA410	10
			1-FA410	100
M 12 x 1,75	M 16 x 1,5	22 mm	FA412	10
			1-FA412	100

Further dimensions on request



BaerFix® Thread Inserts with cutting holes

Material

Case-hardened steel, zinc-plated, yellow chromated
conform to RoHS

d	D	L	No.	packing unit
M 3 x 0,5	M 5 x 0,6	4 mm	FEL03	10
			1-FEL03	100
M 4 x 0,7	M 6,5 x 0,8	6 mm	FEL04	10
			1-FEL04	100
M 5 x 0,8	M 8 x 1,0	7 mm	FEL05	10
			1-FEL05	100
M 6 x 1,0	M 10 x 1,25	8 mm	FEL06	10
			1-FEL06	100
M 8 x 1,25	M 12 x 1,5	9 mm	FEL08	10
			1-FEL08	100

Further dimensions on request

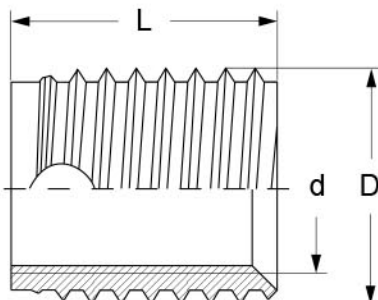


Material

Stainless steel 1.4305 (AISI 303)

d	D	L	No.	packing unit
M 3 x 0,5	M 5 x 0,6	4 mm	FAL03	10
			1-FAL03	100
M 4 x 0,7	M 6,5 x 0,8	6 mm	FAL04	10
			1-FAL04	100
M 5 x 0,8	M 8 x 1,0	7 mm	FAL05	10
			1-FAL05	100
M 6 x 1,0	M 10 x 1,25	8 mm	FAL06	10
			1-FAL06	100
M 8 x 1,25	M 12 x 1,5	9 mm	FAL08	10
			1-FAL08	100


Further dimensions on request





BaerFix® Thread Inserts with cutting holes for spark plug

Material
Case-hardened steel, zinc-plated

d	D	L		No.	packin unit
M 10 x 1,0	special size	8 mm	12,4 mm	FE101008	5
M 10 x 1,0	special size	13 mm	12,4 mm	FE101013	5
M 12 x 1,25	special size	10 mm	14,5 mm	FE121210	5
M 12 x 1,25	special size	14 mm	14,5 mm	FE121214	5
M 14 x 1,25	M 17,7 x 1,25	9 mm	17,0 mm	FE141259	5
M 14 x 1,25	M 17,7 x 1,25	15 mm	17,0 mm	FE141251	5



BaerFix® Thread Inserts for special applications

BAER Company develops and produces customer-oriented thread inserts and threading tools. Special applications can have special requirements to materials, dimensions, corrosion resistance, force effects, lifting capacities, pull out-strength or many more. Please send us your inquiry or give us a call. We enjoy to consult you in your applications.

- BaerFix® Thread Inserts with cutting holes, self-tapping
- BaerFix® Thread Inserts with hexagonal socket, self-tapping
- BaerFix® Thread Inserts for cold installation
- BaerFix® Thread Inserts for heat installation
- BaerFix® Thread Inserts for ultrasonic installation
- BaerFix® Thread Inserts for Screwing into a threaded hole
- Custom-made thread thread inserts (detail drawing or samples)

